



YTO GROUP CORPORATION, founded in 1955, is one of the leading manufacturers of farm equipments in China. We have provided over 3 million units of tractors to the market for the past 50 years and have the ability of providing all kinds of solutions for farmers with full series of tractors and farming implements.

YTO tractors have been exported to more than 100 countries in the world. We have the European E-mark homologation certificates and American EPA certificates.

Through our dealer's network, with powerful parts supply system and service centers, we are dedicated to helping our customers be more productive and to improving the quality of life for farmers around the world.

Catalogue

70–220Hp Wheeled Tractor2

30–55Hp Wheeled Tractor8

25–45Hp Wheeled Tractor12

40–140Hp Chain Track Tractor 16

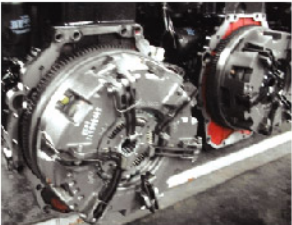
Update of Farm Implements22

70-220Hp Wheeled Tractor

- 70-95Hp Series of 4WD
- 100-130Hp Series of 4WD
- 160-220Hp Series of 4WD
- 70-80Hp Series fruit garden type of 4WD
- 70-100Hp Series of 2WD

YTO-X704/YTO-X754/YTO-X804/YTO-X854/YTO-X904/YTO-LX954

70-95Hp Series of 4WD



LUK Clutch



Multi-Way Hydraulic Output

PRODUCT FEATURES

- YTO 4-Cylinder Diesel Engine of UK Racado Technology Applied, Typical of Large Torque Reserve, Vigorous Power, Low Carbon and Environment-Friendly, and Low Fuel Specific Consumption
- European Technology Applied to Transmission System, 12F+4R (Optional 12F+12R or 24F+8R), Optional Synchronizer Gear Shifting, Able for Smooth Gear Shift so long as not Parked, Characterized by more Handy and Prompt Operation
- YTO Front Axle of European Technology Used, Reliable and Durable
- LUK Dual Clutch of Independent Control, Featuring High Reliability, able for Normal Drive of Farm Implement at Gear Shifting of Transmission, of Higher Operating Efficiency
- Hydraulic Steering System, with Adjustable Steering Wheel, Featured by Handy and Comfortable Control
- Static Hydraulic Wet, and Disc Brake, Safe and Reliable
- Synchronized and Independent PTO Double-Speed Power Output, to Meet the Requirements for Matching Multiple Farm Implements
- Adjustable Single/Double-Acting Multi-Way Valve, 2 or 3 Groups of Hydraulic Outputs, Typical of Strong Adaptability
- Fully-Enclosed Cab, with Wide Visibility, Characterized by Nice Appearance, Comfort, and Luxury, and Optional Installation of heater and Air Conditioner

PRODUCT TECHNICAL PARAMETERS

Model	YTO-X704	YTO-X754	YTO-X804	YTO-X854	YTO-X904	YTO-LX954
Complete Machine Parameters						
Type	4 × 4					
Overall Dimensions(L × W × H) (mm)	4250 × 2145 × 2650		4350 × 2170 × 2740		4350 × 2300 × 2765	4350 × 2100 × 2765
Wheel Base (mm)	2314					
Min. Ground Clearance (mm)	370		430		440	
Min. Operating Weight (Kg)	3540		3675		3920	
Tyre Spec F/R	11.2-24/16.9-30		11.2-28/13.6-38		13.6-24/16.9-34	
Wheel Track F/R(mm)	1569-2005/1500-2100		1630-1960/1500-2100		1562-2000/1520-2120	
Number of Transmission Gears F/R	12/4					
Speed Range (Km/h) F/R	1.54-25.46/4.02-12.07	1.54-25.46/4.02-12.07	1.63-26.82/4.23-12.69	1.64-26.97/4.26-12.76	1.65-27.17/4.28-12.85	2.17-36.74/5.64-17.39
Lifting Force 610mm (KN)	≥21.9					
Lifting Force Articulated Point (KN)	25.6					
Engine Parameters						
Model	LR4A3-23	LR4B5-23	LR4B5-23	LR4M5-23	LR4M5-23	LR4A3L-23
Type	4-Cylinder, Vertical, Water Cooled, 4-Stroke, Direct Injection Combustion Chamber, Natural Aspiration					4-Cylinder, Vertical, Water Cooled, 4-Stroke, Direct Injection Combustion Chamber, turbocharging air-air intercooling
Displacement (L)	4.33	4.95	4.95	5.13	5.13	4.33
Rated Power/Speed (Kw/rpm)	51.5/2300	55/2300	59/2300	62.5/2300	66.2/2300	70/2300





LUK Clutch

Multi-Way Hydraulic Output

PRODUCT FEATURES

- YTO Diesel Engine Produced by UK Technology Applied, Typical of Large Torque, Strong Overloading Capacity, Low Fuel Specific Consumption, Energy Saving and Environment-Friendly
- Italian Technology Applied to Transmission System, Characterized by Forced Cooling and Forced Lubrication, as well as Reinforced Heavy Load Transmission, Reliable and Durable
- Synchronizer Gear Shift Ensuring Impact-Free and Noise-Free Gear Shifting, with 12F+4R, or 24F+8R Gear Positions, Featuring Wide Adaptability, and High Operating Efficiency
- LUK Dual Clutch of Independent Control, Reliable and Durable
- Full Hydraulic Steering System, with Adjustable Steering Wheel, Typical of Handy and Comfortable Control
- Hydraulic Wet, and Disc Brake, Safe and Reliable
- Synchronized and Independent PTO Double-Speed Power Output, PTO Shaft Heat Automatically Adaptable to Different Speeds, to ensure the Speed Compliance with the Matched Implement
- Hydraulic System Provided with Return Oil Filter Device, Featured by High Filtration Precision, Low System Contamination, and High Reliability
- Adjustable Single/Double-Acting Multi-Way Valve, 2 or 3 Groups of Hydraulic Outputs, Characterized by a Wide Adaptability for Matching Implements
- Fully-Enclosed Cab, Provided with Wide Visibility, and Equipped with Heater, Air Conditioner, Acoustic and Dust Filtration Systems, in Nice Appearance, and Comfortable

PRODUCT TECHNICAL PARAMETERS

Model	YTO-X1004	YTO-X1104	YTO-X1204	YTO-X1254	YTO-X1304
Complete Machine Parameters					
Type	4 × 4				
Overall Dimensions(L × W × H) (mm)	5010 × 2192 × 3060	5040 × 2255 × 3060	5040 × 2380 × 3100		5050 × 2370 × 2890
Wheel Base (mm)	2688.5				
Min. Ground Clearance (mm)	450		470		
Min. Operating Weight (Kg) (ROPS)	4750	4820	4850		4910
Tyre Spec F/R	14.9-24/16.9-38		14.9-26/18.4-38		
Wheel Track F/R(mm)	1672-2003/1600-2200	1672-2003/1662-2262			1822-2153/1662-2262
Number of Transmission Gears F/R	12/4				
Speed Range (Km/h) F/R	2.06-28.4/4.95-13.28		2.19-29.63/4.72-13.83		
Lifting Force 610mm (KN)	≥25.5	≥25.9			
Lifting Force Articulated Point (KN)	28	29			
Engine Parameters					
Model	LR6A3-23	LR6B3-23	LR6B5-23	LR6M5-23	LR6M5-23
Type	6-cylinder, vertical, water-cooled, 4-stroke direct injection diesel engine				
Displacement (L)	6.49	6.87	7.43	7.7	
Rated Power/Speed (Kw/rpm)	73.5/2300	81/2300	88.2/2300	92/2300	95.6/2300



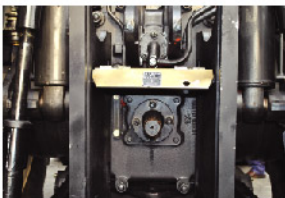
Large-Capacity Fuel Tank



Multi-Way Hydraulic Output



Rear Wheel Track Stepless Adjustable



Electro-Hydraulic Controlled PTO

PRODUCT FEATURES

- Supercharged Air/Air Inter-Cooled Diesel Engine Applied, Typical of Vigorous Power, and Low Fuel Specific Consumption, Energy Saving and Environment-Friendly
- Italian Technology Assimilated for Transmission System, and Forced Cooling and Forced Lubrication Systems Applied, Reliable and Durable under Heavy Load Operating Condition
- 12F+4R Synchronizer Gear Shift Ensuring Impact-Free and Noise-Free Gear Shifting
- CARRARO Front Drive Axle Applied, in Symmetrical Design, with Mid-Mounted Transmission Shaft, Characterized by Handy and Flexible Steering
- Air Pressure Boosting-Type Clutch Control Mechanism, Typical of Handy Operation and Control
- Full Hydraulic Steering System, withy Adjustable Steering Wheel, Featured by Handy and Comfortable Control
- Hydraulic Wet, and Multi-Disc Self-Boosting Brake System, Safe and Reliable
- Independent Double-Speed PTO Power Output under Electro-Hydraulic Control, Featured by Convenience Control
- One-Key Electro-Hydraulic Controlled Differential Lock, Convenient and Practical
- Fully-enclosed cab with wide vision, equipped with heater, A/C, audio and air dust filtering system, is beautiful and comfortable;
- Rear Double-Wheel Configuration, with Vigorous Drive, and Rear Wheel Tack Stepless Adjustable, to Adapt to Requirements for Row Spacing of Different Farm Crops
- Rear-Mounted Electro-Hydraulic Control Type III or Type II Suspension, Provided with Quick Trailer Combination for Implement
- Adjustable Single/Double-Acting Multi-Way Valve, with 3 or 4 Groups of Hydraulic Outputs, Typical of Strong Adaptability
- 400L Large-Capacity Fuel tank Adaptable to Long-Time Uninterrupted Operation

PRODUCT TECHNICAL PARAMETERS

Model	YTO-1604	YTO-1804	YTO-LX2004	YTO-LX2204
Complete Machine Parameters				
Type	4 × 4			
Overall Dimensions(L × W × H) (mm)	5390 × 2696 × 3450	5390 × 2696 × 3490	5430 × 2750 × 3130	
Wheel Base (mm)	2848		2928	
Min. Ground Clearance (mm)	459	495	460	460
Min. Operating Weight (Kg) (ROPS)	7115	7255	7400	7600
Tyre Spec F/R	14.9-28/18.4-38	16.9-28/20.8-38		
Wheel Track F/R(mm)	1680-2176/1620-2200		2.00-36.69/4.44-14.48	
Number of Transmission Gears F/R	12/4			
Speed Range (Km/h) F/R	2.25-29.06/4.25-11.47	2.35-30.39/4.44-11.99	2.00-36.69/4.44-14.48	
Lifting Force 610mm (KN)	≥ 36		≥ 47	
Lifting Force Articulated Point (KN)	57		70	
Engine Parameters				
Model	SC8D190.1G2	SC8D215G2	SC9D240G2	SC9D250G2
Type	6-cylinder, vertical, 4-stroke, direct injection, supercharging air-air intercooling			
Displacement (L)	8.27		8.82	
Rated Power/Speed (Kw/rpm)	118/2200	132/2200	147/2200	162/2200



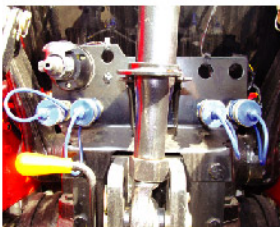
Swinging Traction and Suspension



Mid-Mounted Anti-Tilt Stand



Narrow Wheel Track



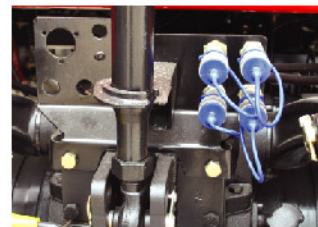
Multi-Way Hydraulic Output

PRODUCT FEATURES

- Compact Tractor Structure, Typical of Small Mass, Narrow Wheel Track, Mid-Mounted Anti-Tilt Stand, Applicable to Special Operating Requirements such as Fruit Garden, etc
- YTO 4-Cylinder Diesel Engine of UK Ricardo Technology Applied, Characterized by Large Torque, Strong Overloading Capacity, and Low Fuel Specific Consumption
- European Technology Applied to Transmission System, Provided with Sliding Sleeve Gear Shift, and 12F+4R Transmission Gear Positions
- YTO Front Axle of European Technology Used, Reliable and Durable
- Dual Clutch of Independent Control, Featuring High Reliability, able for Normal Drive of Farm Implements at Transmission Gear Shifting, of Higher Operating Efficiency
- Full Hydraulic Steering System, Typical of Handy Operation
- Static Hydraulic Wet, and Disc Brake, Safe and Reliable
- Synchronized and Independent PTO Double-Speed Power Output, Two Groups of Hydraulic Output Multi-Way Valves, to Meet the Requirement for Matching Multiple Farm Implements
- Rear-Mounted Type-II 3-Point Suspension, and Optional Quick Trailer Combination

PRODUCT TECHNICAL PARAMETERS

Model	YTO-LX704F	YTO-LX804F
Complete Machine Parameters		
Overall Dimensions ((L × W × H)) mm	4250 × 1500 × 1500	
Wheel Base mm	2184	
Min. Ground Clearance mm	300	
Min. Operating Weight Kg (with anti-tilt stand and counterweight rack)	3000	
Tyre Spec F/R	9.5-20/14.9-24	
Wheel Track F/R (mm)	1260/1150	
Number of Gears	12F+4R	
Speed Range (forward/reverse) Km/h	1.73-28.5/4.49-13.49	
Lifting Force (610mm behind the suspension point)	≥ 16	
Lifting Force Articulated Point	19.2	
Diesel Engine Parameters		
Model	LR4A3-23	LR4B5-23
Type	Vertical, Water Cooled, 4-Stroke, Direct Injection, Natural Aspiration	
Displacement (L)	4.33	4.95
Rated Power/Speed (Kw/rpm)	51.5/2300	59/2300



Multi-Way Hydraulic Output

PRODUCT FEATURES

- YTO 4-Cylinder Diesel Engine of UK Ricardo Technology Applied, Typical of Large Torque Reserve, Vigorous Power, Low Carbon and Environment-Friendly, and Low Fuel Specific Consumption
- European Technology Applied to Transmission System, 12F+4R (Optional 12F+12R or 24F+8R), Optional Synchronizer Gear Shifting, Able for Smooth Gear Shift so long as not Parked, Characterized by more Handy and Prompt Operation
- Dual Clutch of Independent Control, Typical of High Reliability, able for Normal Drive of Farm Implement at Transmission Gear Shifting, of Higher Operating Efficiency
- Hydraulic Steering System, with Adjustable Steering Wheel, Featured by Handy and Comfortable Control
- Static Hydraulic Wet, and Disc Brake, Safe and Reliable
- Synchronized and Independent PTO Double-Speed Power Output, to Meet the Requirements for Matching Multiple Farm Implements
- Adjustable Single/Double-Acting Multi-Way Valve, 2 or 3 Groups of Hydraulic Outputs, Typical of Strong Adaptability
- OECD Anti-Tilt Stand, Safe and Reliable

PRODUCT TECHNICAL PARAMETERS

Model	YTO-X700	YTO-X750	YTO-X800	YTO-X850	YTO-X900	YTO-X950	YTO-LX1000
Complete Machine Parameters							
Type	4 × 2						
Overall Dimensions (L × W × H)(mm)	4250 × 2090 × 2850					4360 × 2090 × 2850	
Wheel Base(mm)	2342						
Min. Ground Clearance (mm)	360						
Min. Operating Weight(Kg) (with anti-tilt stand and counterweight rack)	3030					3110	
Tyre Specification F/R	7.50-16/14.9-30						
Wheel Track F/R (mm)	1400-1900/1500-2100						1400-1900/1540-2120
Number of Gears F/R	12/4						
Speed Range (Km/h) F/R	1.92-31.72/5-15.01					2.13-34.85/5.53-16.49	2.04-34.61/5.31-16.38
Lifting Force 610mm (KN)	≥ 21.9						
Lifting Force Articulated Point(KN)	≥ 25.6						
Diesel Engine Parameters							
Model	LR4A3-23	LR4B5-23	LR4B5-23	LR4M5-23	LR4M5-23	LR4M5-23	LR4A3L-23
Type	4-Cylinder, Vertical, Water Cooled, 4-Stroke, Direct Injection Combustion Chamber, Natural Aspiration						4-Cylinder, Vertical, Water Cooled, 4-Stroke, Direct Injection Combustion Chamber, turbocharging air-air intercooling
Displacement (L)	4.33	4.95	4.95	5.13	5.13	5.13	
Rated Power/Speed (Kw/rpm)	51.5/2300	55/2300	55/2300	62.5/2300	66.2/2300	70/2300	

30-55Hp Wheeled Tractor

- ME30-40Hp Series
- 40-45Hp Series
- MF50-55Hp Series

YTO-ME304/YTO-ME354/YTO-ME300/YTO-ME350/YTO-ME350H/YTO-400H

ME30-40Hp Series



Suspended Clutch, and Brake Control Mechanism



Multi-Way Hydraulic Output

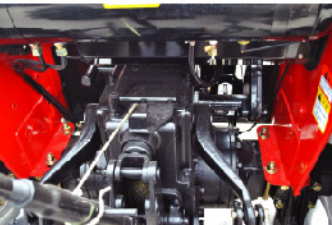
PRODUCT FEATURES

- 3/4-Cylinder Direct Injection Diesel Engine, Typical of Large Torque Reserve, and Vigorous Power
- Transmission, and Power Output Shaft Sliding Sleeve Gear Shift, Optional Installation of Shuttle Shift and Creeper Gear
- Wet, and Double-Disc Plate Brake, Characterized by Good Braking Effect and High Safety
- Dual Clutch, and Transmission Farm Implement Able for Normal Drive at Gear Shifting, Featured by Higher Operating Efficiency
- Double-Speed PTO Structure, and Two Groups of Hydraulic Outputs, to Meet the Operating Requirement for Matching more Implements
- Compact Structure, Small Turning Radius, Flexible Turning, and Applicable to Small-Plot Operation
- Optional High-Arch Tractor of 710mm Arch, for Intertilling Operation

PRODUCT TECHNICAL PARAMETERS

Model	YTO-ME304	YTO-ME354	YTO-ME300	YTO-ME350	YTO-ME350H	YTO-400H
Complete Machine Parameters						
Type	4 × 4		4 × 2		4 × 2	
Overall Dimensions(L × W × H) (mm)	3575 × 1485 × 2632	3595 × 1485 × 2677	3520 × 1485 × 2632	3540 × 1485 × 2677	3595 × 1700 × 2740	3600 × 1700 × 2740
Wheel Base (mm)	1745	1760	1690	1705	1730	1790
Min. Ground Clearance (mm)	235	280	338	380	710	
Min. Operating Weight (Kg) (ROPS)	1655	1745	1445	1535	1700	1650
Tyre Spec F/R	6.50-16/11.2-24	7.50-16/11.2-28	5.50-16/11.2-24	5.50-16/11.2-28	6.0-16/12.4-28	
Wheel Track F/R(mm)	1200/1100-1400		1100-1400/1100-1400		1100-1400/1100-1400	
Number of Transmission Gears F/R	8/4					
Speed Range (Km/h) F/R	2.21-28.93/3.27-9.99	2.25-29.53/3.34-10.20	2.21-28.93/3.27-9.99	2.25-29.53/3.34-10.20	2.09-27.38/3.10-9.45	2.27-29.86/3.38-10.31
Lifting Force 610mm (KN)	≥5.0	≥5.8	≥5.0	≥5.8	≥5.8	≥6.6
Lifting Force Articulated Point (KN)	7.7	8.5	7.7	8.5	/	/
Engine Parameters						
Model	ZN390T	SL3100ABT-2	ZN390T	SL3100ABT-2	SL3100ABT-2	C490BT-7
Type	3-cylinder, in-line, vertical, water-cooled, 4-stroke					4-cylinder, in-line, vertical, water-cooled, 4-stroke
Displacement (L)	1.81	2.76	1.81	2.76	2.76	2.54
Rated Power/Speed (Kw/rpm)	22.1/2350	25.7/2200	22.1/2350	25.7/2200	25.7/2200	29.4/2300





Built-in lifter

PRODUCT FEATURES

- 3/4-Cylinder Direct Injection Diesel Engine, Typical of Large Torque Reserve, Low Carbon and Environment-Friendly
- European Technology Applied to Transmission System, Reliable and Durable, 8F+4R Gear Positions (8F+8R Gear Positions for 454 Machine Type)
- Special Anti-Mud Water Structure Applied to Front Drive Axle, Characterized by Reliable Sealing, and Distinct Paddy Field Operating Advantage
- Integrated Built-in Structure Adopted for Hydraulic Lifting System, in Compact Structure, Featuring Flexible Operating Control
- Full Hydraulic Steering, Featured by Handy Control, Safe and Reliable
- Products of Some Models e-mark Authenticated

PRODUCT TECHNICAL PARAMETERS

Model	YTO-404	YTO-454	YTO-400	YTO-450
Complete Machine Parameters				
Type	4 × 4		4 × 2	
Overall Dimensions(L × W × H) (mm)	3727 × 1630 × 2400	3742 × 1640 × 2435	3737 × 1650 × 2400	3742 × 1645 × 2405
Wheel Base (mm)	1965	1900	1942	1940
Min. Ground Clearance (mm)	270	350	410	380
Min. Operating Weight (Kg) (ROPS)	1990	2070	1820	1820
Tyre Spec F/R	7.5-16/11.2-28	8.3-20/12.4-28	6.00-16/12.4-28	
Wheel Track F/R(mm)	1250/1300-1600	1250/1300-1600	1350-1550/1300-1500	1250-1450/1300-1500
Number of Transmission Gears F/R	8/4	8/8	8/4	
Speed Range (Km/h) F/R	2.49-32.59/3.69-11.25	2.25-29.53/3.34-10.20	2.58-33.83/3.82-11.68	2.49-32.65/3.70-11.28
Lifting Force 610mm (KN)	≥6.62	≥7.45	≥6.62	≥7.45
Lifting Force Articulated Point (KN)	8.52	9.60	8.52	9.60
Engine Parameters				
Model	C490BT-8	YT3B2-22	C490BT-8	A495BT-5
Type	4-cylinder, in-line, vertical, water-cooled, 4-stroke	3-cylinder, in-line, vertical, water-cooled, 4-stroke	4-cylinder, in-line, vertical, water-cooled, 4-stroke	
Displacement (L)	2.67	3.30	2.67	2.76
Rated Power/Speed (Kw/rpm)	29.4/2400	33.1/2200	29.4/2400	25.7/2200



YTO diesel engine



Side Control

PRODUCT FEATURES

- YTO Independent Brand 4-Cylinder Diesel Engine, Typical of Large Torque Reserve, Vigorous Power, and High Economic Efficiency
- Transmission Reliable and Durable, Characterized by Outstanding Heavy Load Operating Advantage, Provided with Shuttle Shift Structure, Featuring Higher Operating Efficiency
- Integrated Axle Housing Structure Applied to Front Drive Axle, Featured by Stronger Load Bearing Capacity, with Bevel Gear Transmission, and Better Sealing Property
- Additional Installation of Clutch Pedal Safety Startup Control Device, to Avoid Unsafe Factors Arisen from Mistaken Startup of Tractor
- Products of Some Models e-mark Authenticated

PRODUCT TECHNICAL PARAMETERS

Model	YTO-MF504	YTO-MF554	YTO-MF500	YTO-MF550
Complete Machine Parameters				
Type	4 × 4		4 × 2	
Overall Dimensions(L × W × H) (mm)	3910 × 1745 × 2545	3910 × 1745 × 2565	3910 × 1745 × 2545	3910 × 1745 × 2565
Wheel Base (mm)	2063	2127	2063	2127
Min. Ground Clearance (mm)	350		400	
Min. Operating Weight (Kg) (ROPS)	2326	2380	2130	2180
Tyre Spec F/R	8.3-20/12.4-28	8.3-20/13.6-28	6.00-16/12.4-28	6.50-16/13.6-28
Wheel Track F/R(mm)	1250/1400-1600		1350-1550/1400-1600	
Number of Transmission Gears F/R	8/8			
Speed Range (Km/h) F/R	2.37-31.06/2.03-26.62	2.47-32.38/2.12-27.75	2.37-31.06/2.03-26.62	2.47-32.38/2.12-27.75
Lifting Force 610mm (KN)	≥8.28	≥9.09	≥8.28	≥9.09
Lifting Force Articulated Point (KN)	10.66	11.70	10.66	11.70
Engine Parameters				
Model	YT4A2-22	YT4A2-22	YT4A2-22	YT4A2-22
Type	4-cylinder, in-line, vertical, water-cooled, 4-stroke			
Displacement (L)	4.15	4.15	4.15	4.15
Rated Power/Speed (Kw/rpm)	36.8/2200	40.4/2200	36.8/2200	40.4/2200

25-45Hp Wheeled Tractor

□SG25-35Hp Series

□SG30-45Hp Series compact

YTO-SG254/YTO-SG284/YTO-SG304/YTO-SG354

YTO SG25-35Hp Series



Side Control



Hitch



Rear Wheel Track
Stepless Adjustable

■ PRODUCT FEATURES

- ◎3/4-Cylinder Diesel Engine, Typical of Vigorous Power, Stable Operation, Low Carbon and Environment-Friendly
- ◎European Technology Applied to Transmission System, Reliable and Durable, 8F+4R Gear Positions (Optional 8F+8R or 16F+8R Gear Positions)
- ◎Integrated Axle Housing Structure Applied to Front Drive Axle, Characterized by Stronger Load Bearing Capacity
- ◎Dual Clutch, Double-Speed PTO Structure, Two Groups of Hydraulic Outputs, to Meet the Operating Requirements for Matching more Implements
- ◎Suspended Clutch and Brake Control Mechanism, Side Mounted Main and Auxiliary Gear Shift Lever, Featured by Drive and Ride Comfort, and Convenient Control
- ◎Full Hydraulic Steering, Featuring Handy Control
- ◎Additional Installation of Safety Startup Control Device, to Avoid Unexpected Accident Arisen from Mistaken Startup of Tractor
- ◎Products of Some Models e-mark Authenticated
- ◎Optional Installation of Rear Wheel Track Stepless Adjustable

■ PRODUCT TECHNICAL PARAMETERS

Model	YTO-SG254	YTO-SG284	YTO-SG304	YTO-SG354
Complete Machine Parameters				
Type	4 × 4			
Overall Dimensions(L × W × H) (mm)	3405 × 1440 × 1535	3490 × 1450 × 1535		3650 × 1590 × 1580
Wheel Base (mm)	1698	1738		1855
Min. Ground Clearance (mm)	315		325	
Min. Operating Weight (Kg)	1550			1570
Tyre Spec F/R	6.00-16/9.5-24		6.50-16/11.2-24	
Wheel Track F/R(mm)	1200/1100~1400			
Number of Transmission Gears F/R	8/4			
Speed Range (Km/h) F/R	2.07-29.65/2.45-7.84	2.12-30.28/2.50-8.01		2.22-32.28/2.69-8.39
Lifting Force 610mm (KN)	≥4.14	≥4.64	≥4.96	≥5.80
Lifting Force Articulated Point (KN)	6.5	7.1	7.6	8.3
Engine Parameters				
Model	YD385T	ZN390T		YND485T
Type	3-Cylinder, Vertical, Water Cooled, 4-Stroke			4-Cylinder, Vertical, Water Cooled, 4-Stroke
Displacement (L)	1.53	1.81		2.16
Rated Power/Speed (Kw/rpm)	18.4/2350	20.6/2400	22.1/2400	25.7/2400



12

25-45Hp Wheeled Tractor

13

25-45Hp Wheeled Tractor



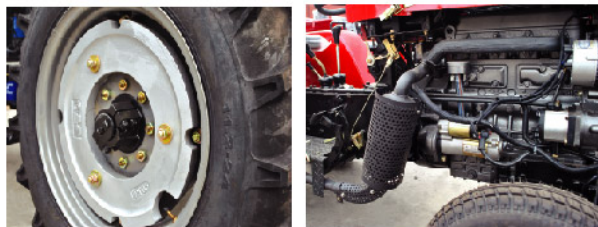
Rear Wheel Track
Stepless Adjustable

PRODUCT FEATURES

- 3/4-Cylinder Diesel Engine, Typical of Vigorous Power, Stable Operation, Low Carbon and Environment-Friendly
- European Technology Applied to Transmission System, Reliable and Durable, 8F+4R Gear Positions (Optional 8F+8R or 16F+8R Gear Positions)
- Integrated Axle Housing Structure Applied to Front Drive Axle, Characterized by Stronger Load Bearing Capacity
- Dual Clutch, Double-Speed PTO Structure, Two Groups of Hydraulic Outputs, to Meet the Operating Requirements for Matching more Implements
- Suspended Clutch and Brake Control Mechanism, Side Mounted Main and Auxiliary Gear Shift Lever, Featured by Drive and Ride Comfort, and Convenient Control
- Full Hydraulic Steering, Featuring Handy Control
- Additional Installation of Safety Startup Control Device, to Avoid Unexpected Accident Arisen from Mistaken Startup of Tractor
- Products of Some Models e-mark Authenticated
- Optional Installation of Rear Wheel Track Stepless Adjustable

PRODUCT TECHNICAL PARAMETERS

Model	YTO-SG250	YTO-SG280	YTO-SG300	YTO-SG350
Complete Machine Parameters				
Type	4 × 2			
Overall Dimensions(L × W × H) (mm)	3490 × 1450 × 1550			3650 × 1590 × 1580
Wheel Base (mm)	1690			1760
Min. Ground Clearance (mm)	320			330
Min. Operating Weight (Kg)	1440	1480		
Tyre Spec F/R	5.00-16/9.5-24		5.50-16/11.2-24	
Wheel Track F/R(mm)	1100~1400/1100~1400			
Number of Transmission Gears F/R	8/4			
Speed Range (Km/h) F/R	2.07-29.65/2.45-7.84	2.12-30.28/2.50-8.01		2.22-32.28/2.69-8.39
Lifting Force 610mm (KN)	≥4.14	≥4.64	≥4.96	≥5.80
Lifting Force Articulated Point (KN)	6.5	7.1	7.6	8.3
Engine Parameters				
Model	YD385T	ZN390T		YND485T
Type	3-Cylinder, Vertical, Water Cooled, 4-Stroke			4-Cylinder, Vertical, Water Cooled, 4-Stroke
Displacement (L)	1.53	1.81		2.16
Rated Power/Speed (Kw/rpm)	18.4/2350	20.6/2400	22.1/2400	25.7/2400



Rear Wheel Track
Stepless Adjustable



Under-Mounted Muffler

PRODUCT FEATURES

- 3/4-Cylinder Diesel Engine, Typical of Vigorous Power, Stable Operation, Low Carbon, and Environment-Friendly
- European Technology Applied to Transmission System, Reliable and Durable, 8F+4R Gear Positions
- Double-Speed PTO Structure, to Meet the Operating Requirement for Matching more Implements
- Small Body, Short Wheel Base, in Compact Structure, Applicable to Large-Greenhouse Operation

PRODUCT TECHNICAL PARAMETERS

Model	YTO-SG300-1	YTO-SG350-1	YTO-SG400-1	YTO-SG454-1
Complete Machine Parameters				
Type	4 × 2			4 × 4
Overall Dimensions (L × W × H)(mm)	2770 × 1130 × 1230			3200 × 1480 × 1220
Wheel Base (mm)	1480			1875
Min. Ground Clearance (mm)	210			225
Min. Operating Weight (Kg)	1160			1400
Tyre Spec F/R	4.5-12/9.5-16			6.0-12/9.5-16
Wheel Track F/R(mm)	910/865			1000/1080-1250
Number of Transmission Gears F/R	8/4			
Speed Range (Km/h) F/R	1.77-25.31/2.09-6.70	1.73-24.78/2.05-6.56	1.77-25.31/2.09-6.70	1.65-23.52/1.94-6.22
Lifting Force 610mm (KN)	≥4.96	≥5.80	≥6.63	≥7.40
Diesel Engine Parameters				
Model	KL390BT1	4L22BT	4L23BT	YD4JT
Type	3-Cylinder, Vertical, Water Cooled, 4-Stroke		4-Cylinder, Vertical, Water Cooled, 4-Stroke	
Displacement (L)	1.91	2.16	2.31	2.98
Rated Power/Speed (Kw/rpm)	22.1/2400	25.7/2350	29.4/2400	33.1/2300

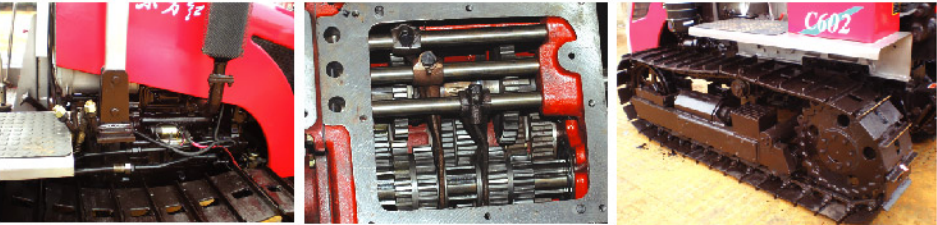


40-140Hp Chain Track Tractor

- C40-60Hp Series
- C70-90Hp Series
- C100-130Hp Series
- C140Hp
- LX90Hp

YTO-C402/YTO-C502/YTO-C602

YTO C40-60Hp Series



PRODUCT FEATURES

- ◎ YTO diesel engine is manufactured with British technology and advantaged by large torque, strong overload capacity, low fuel consumption, and good energy-saving and environmentally friendly performance.
- ◎ Adopt (2+1) × 4 goggling sleeve shifting compound gearbox advantaged by multiple gears, convenient operation, and suitable for various operations.
- ◎ Adopt dry-type single disc spring compressed and normally closed dual-acting clutch, advantaged by light and convenient operation, as main clutch.
- ◎ Adopt dry-type multi-disc steering clutch, use friction made of new material and featured with long service life, and use floating band brake featured with reliable braking.
- ◎ Adopt semi-rigid suspension system, capable of improving the performance of bulldozing works.

PRODUCT TECHNICAL PARAMETERS

Model	C402	C502	C602
Complete parameters			
Overall dimension (L × W × H) (with shovel blade) (mm)	3760 × 2016 × 1680		
Min. operating mass (kg)	3660	3670	3700
Track gauge (mm)	1100		
Wheelbase (mm)	1600		
Track shoe width (mm)	310		
Ground pressure (with shovel blade) (kpa)	36.8	36.9	37.2
Diesel engine			
Model	YT3A2-22	YT3B2-22	YT3B2-22
Type	In-line, water-cooled, 4-stroke		
Calibrated power and revolution (kW/rpm)	29.4/2200	36.7/2200	44/2400
Gearbox			
Gearbox speed range F/R	8/4		
Speed (Km/h) F/R	1.81~12.78/2.01~6.05		1.97~13.94/2.20~6.60
Power of power output shaft (kW)	25	31	37
PTO revolution (r/min)	540/720		
Clutch	Single disc, double acting		
Working device			
Three-point suspension type	Rear-mounted, three-point suspension (type II)		
Plowing depth control method	Height adjustable		
Lifting force (KN)	8		
Size of dozer blade (W × H) (mm)	2016 × 680		
Embedded depth of dozer blade (mm)	260		

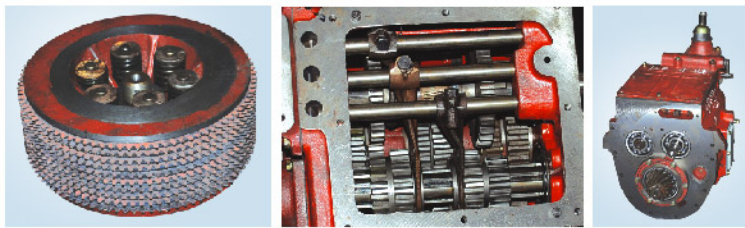


PRODUCT FEATURES

- YTO diesel engine is manufactured with British technology and advantaged by large torque, strong overload capacity, low fuel consumption, and good energy-saving and environmentally friendly performance.
- Adopt (4F+2R) slide gear shifting gearbox advantaged by rational gear range, and suitable for farmland work as well as bulldozing work.
- Adopt rear axle of novel seal structure, capable of reducing steering oil intake.
- Adopt final transmission gear of simple beam structure, featured with reliable performance.
- Adopt hydraulic power steering, capable of reducing work intensity of driver.
- Have optional rubber track to improve pavement passing performance and facilitate turnaround work.
- Have fully enclosed cab, optional heating, air conditioning and audio system, featured with broad vision, aesthetic and comfortable performance.

PRODUCT TECHNICAL PARAMETERS

Type	C702-A	C802	C902
Complete parameters			
Overall dimension (L × W × H) (mm) (with dozer blade)	4870 × 2462 × 2766		
Overall dimension (L × W × H) (mm) (without dozer blade)	4466 × 1835 × 2766		
Min. operating mass (kg)	6630 (with dozer blade)	6890 (without dozer blade)	
Track gauge (mm)	1435		
Wheelbase (mm)	1622		
Track shoe width (mm)	390		
Ground pressure (kpa)	47.4 (with dozer blade)	49.2 (without dozer blade)	
Diesel engine			
Model	LR4B3-22	LR4A3Z-22	LR6B5-22
Type	In-line, water-cooled, 4-stroke, supercharged	In-line, water-cooled, 4-stroke	In-line, water-cooled, 4-stroke
Calibrated power and revolution (kW/rpm)	51.5/2200	58.8/2200	66.2/2200
Gearbox			
Gearbox speed range F/R	4/2		
Speed (Km/h) F/R	3.67~9.03/3.51~5.59		
Power of power output shaft (kW)	44	49	56
PTO revolution (r/min)	750		
Clutch	Double disc, single acting		
Working device			
Suspension type	Rear-mounted two-point or three-point suspension (type II)		
Plowing depth control method	Height adjustable		
Lifting force (KN)	14		
Size of dozer blade (W × H) (mm)	2462 × 850		
Embedded depth of dozer blade (mm)	290		



PRODUCT FEATURES

- YTO diesel engine is manufactured with British technology and advantaged by large torque, strong overload capacity, low fuel consumption, and good energy-saving and environmentally friendly performance.
- Adopt (6F+2R) goggling sleeve shifting gearbox to improve reliability and reduce operating force.
- Adopt 14' friction plate with damping spring for main clutch to improve service life.
- Optimize central transmission structure to improve reliability; use steering clutch of novel friction material to improve service life thereof.
- Adopt operating mechanism of humanized and optimized layout, meanwhile, use self-lubricating shaft sleeve to reduce operating friction, operating force and maintenance points.
- Have optional rubber track to improve pavement passing performance and facilitate turnaround work.
- Have fully enclosed cab, optional heating, air conditioning and audio system, featured with broad vision, aesthetic and comfortable performance.

PRODUCT TECHNICAL PARAMETERS

Type	C1002	C1202	C1302
Complete parameters			
Overall dimension (L × W × H) (mm) (with dozer blade)	5367 × 2462 × 2910		
Min. operating mass (kg)	7300		
Track gauge (mm)	1435		
Wheelbase (mm)	1792		
Track shoe width (mm)	390		
Ground pressure (kpa)	47.7 (with dozer blade)		
Diesel engine			
Model	LR6A3-21	LR6A3Z-23	LR6A3Z-22
Type	In-line, water-cooled, 4-stroke	In-line, water-cooled, 4-stroke, supercharged	In-line, water-cooled, 4-stroke, supercharged
Calibrated power and revolution (kW/rpm)	73.5/2100	88.2/2300	95.6/2200
Gearbox			
Gearbox speed range F/R	6/2		
Speed (Km/h) F/R	3.20~11.85/2.85~5.41	3.50~13.13/3.13~5.93	3.71~13.90/3.31~6.28
Power of power output shaft (kW)	62	74	81
PTO revolution (r/min)	540/1000		
Clutch	Double disc, single acting		
Working device			
Suspension type	Rear-mounted two-point or three-point suspension (type II)		
Plowing depth control method	Height adjustable		
Lifting force (KN)	14.6		
Size of dozer blade (W × H) (mm)	2462 × 850		
Embedded depth of dozer blade (mm)	330		





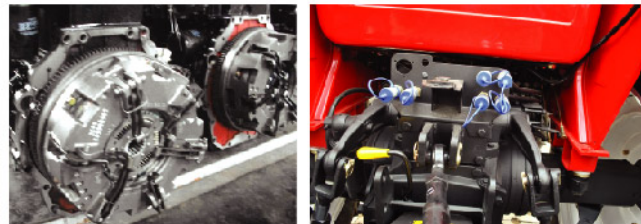
PRODUCT FEATURES

- ◎ YTO diesel engine is manufactured with British technology and advantaged by large torque, strong overload capacity, low fuel consumption, and good energy-saving and environmentally friendly performance.
- ◎ Adopt (2+1) × 4 goggling sleeve shifting compound gearbox to increase gear center distance and improve gear intensity greatly; use large gearbox housing to have large lubricating fluid volume and good heat radiation performance; have rational speed configuration and wide operating gear range to satisfy works of various farmland soils and gain high reliability.
- ◎ Adopt 14' dry-type double disc spring compressed main clutch and adopt the friction plate with damping spring to obtain reliable torque transmission and long service life.
- ◎ Adopt wet-type steering clutch of mature technology, which needs not to be adjusted in use and have long service life and reliable torque transmission.

PRODUCT TECHNICAL PARAMETERS

Type	C1402
Complete parameters	
Overall dimension (L × W × H) (mm) (without dozer blade)	5344 × 1835 × 2910
Min. operating mass (kg) (without dozer blade)	7400
Track gauge (mm)	1435
Wheelbase (mm)	1792
Track shoe width (mm)	390
Ground pressure (kpa)	47.7
Diesel engine	
Model	LR6M3Z-23
Type	In-line, water-cooled, 4-stroke, supercharged
Calibrated power and revolution (kW/rpm)	103/2200
Gearbox	
Gearbox speed range F/R	8/4
Speed (Km/h) F/R	3.9~13.6/4.44~7.74
Power of power output shaft (kW)	87
PTO revolution (r/min)	720/540 (optional)
Clutch	Double disc, single acting
Working device	
Suspension type	Rear-mounted two-point or three-point suspension (type II)
Plowing depth control method	Height adjustable
Lifting force (KN)	14.6
Size of dozer blade (W × H) (mm)	2462 × 850
Embedded depth of dozer blade (mm)	330

- ◎ Adopt self-lubricating bearing for operating mechanism to reduce operating force and reduce maintenance points.
- ◎ Optimize the complete machine by focusing on farmland work as well as combining with bulldozing work, and adjust position of gravity center of the complete machine to improve lifting force thereof.
- ◎ Have optional rubber track to improve pavement passing performance and facilitate turnaround work.
- ◎ Have fully enclosed cab, optional heating, air conditioning and audio system, featured with broad vision, aesthetic and comfortable performance.



LUK Clutch

Multi-Way Hydraulic Output

PRODUCT FEATURES

- ◎ YTO diesel engine is manufactured with British technology and advantaged by large torque, strong overload capacity, low fuel consumption, and good energy-saving and environmentally friendly performance.
- ◎ Adopt (3+1)IA4 compound gearbox advantaged by multiple gears and suitable for works of various soils.
- ◎ Have full hydraulic steering system, full independent power output shaft, and multiple operational revolutions to satisfy requirements of different works and assorted agricultural implements.
- ◎ Have pedal-operated hydraulic traveling brake system and handle-operated stopping brake system featured with safe and reliable performance.
- ◎ Have optional oil separating mechanism with large lifting force for hydraulic system, available for matching with large-scale implements, and also available for mounting forced soil penetrating mechanism.
- ◎ Have optional pneumatic brake device and optional 1/2/3 groups of hydraulic output multi-way valves.
- ◎ Have fully enclosed cab, optional heating, air conditioning and audio system, featured with broad vision, aesthetic and comfortable performance.
- ◎ Available for exchanging with auxiliary box and rear type of YTO-X904 tractor conveniently to become a wheeled tractor.

PRODUCT TECHNICAL PARAMETERS

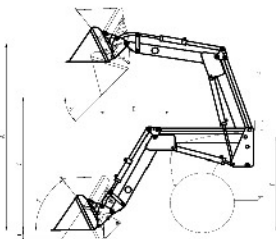
Model	LX904CS
Complete parameters	
Overall dimension (L × W × H) (mm) (without dozer blade)	4350 × 2400 × 2765
Min. operating mass (kg)	4450
Front wheel tread (mm)	1562-2000
Rear track gauge (mm)	1720
Wheelbase (mm)	2314
Track shoe width (mm)	550
Ground pressure (kpa)	30
Grounded length (mm)	1020
Diesel engine	
Model	LR4M5-23
Type	In-line, water-cooled, 4-stroke
Calibrated power and revolution (kW/rpm)	66.5/2300
Gearbox	
Gearbox speed range F/R	12/4
Speed (Km/h) F/R	0.74~12.09/1.92~5.72
Power of power output shaft (kW)	55
PTO revolution (r/min)	720 (optional), 540, 800, 1000, 540/1000, 540/720, 720/800
Clutch	Single disc, double acting
Working device	
Suspension type	Rear-mounted three-point suspension (type II)
Plowing depth control method	Force control, position control, integrated force and position control, floating control
Lifting force (KN)	17
Rated traction (KN)	19.8

Update of Farm Implements

Front loader and rear excavator

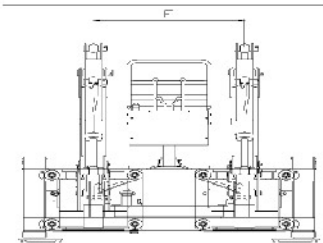
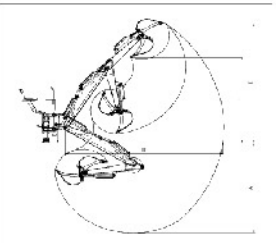


Front loader



Loader Model	Unit	TZ02D	TZ03D	TZ04D	TZ06D	TZ08D	TZ10D	TZ12D
Tractor model	Hp	15~25hp	20~40hp	30~55hp	40~60hp	50~75hp	70~100hp	90~130hp
Max. Lift Height at the attachment pivot point. (A)	mm	2350	2552	2740	3010	3400	3710	3970
Dump Height (C)	mm	1730	1840	2100	2370	2480	2720	3000
Bucket width	mm	1250	1250	1400	1500	1600	1700	2000
Bucket capacity	m ³	0.18	0.18	0.2	0.22	0.43	0.46	0.6
Rated lift capacity	Kg	200	200	300	400	600	800	1000

Rear excavator



Model	Matched power (Hp)	Max. excavating depth A (mm)	Max. dump height B (mm)	Max. excavating height C (mm)	Working radius D (mm)	Ground clearance E (mm)	Lateral displacement F (mm)	Bucket width (mm)	Bucket capacity (m ³)	Net weight (kg)
LW5	15 ~ 25	1650	1530	2600	2300	450	0	340	0.025	360
LW6	20 ~ 35	2000	1860	2970	2700	450	0	340	0.03	550
LW6E							760			600
LW7	30 ~ 50	2400	2050	3210	3140	450	0	380	0.04	560
LW7E							760			620
LW8	45 ~ 90	2800	2380	3460	3600	500	0	420	0.05	630
LW8E							1000			700
LW10	70 ~ 120	3200	2650	3770	3920	500	0	500	0.07	800
LW10E							1200			1000
LW12	100 ~ 140	3655	3627	5040	4510	700	0	575	0.13	1500

